



Fornham Road, Bury St. Edmunds, Suffolk, IP32 6AW

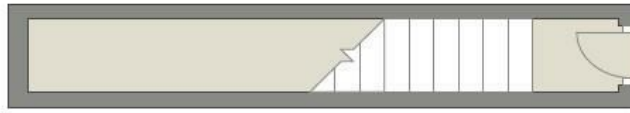
Rent - £1,215 PCM Deposit - £1,401

Shires Residential are delighted to offer this first floor, two bedroom luxury maisonette in a stylish Victorian conversion, with professional interior design and retained Victorian charm. The property enjoys allocated parking, its own private entrance and hallway, well appointed open plan kitchen/living room and bay window, family bathroom and gas fired underfloor heating throughout in addition to communal gardens. The property is situated within walking distance of both the town centre and rail station.

- FIRST FLOOR APARTMENT
- 2 DOUBLE BEDROOMS
- MODERN THROUGHOUT
- FAMILY BATHROOM
- DESIGNATED PARKING & COMMUNAL GARDEN
- CLOSE TO TOWN
- UNDERFLOOR HEATING & ENERGY RATING - C
- APPROXIMATE SIZE - 775 SQFT
- COUNCIL TAX BAND - B
- AVAILABLE NOW

Ground Floor

Approx. 0.1 sq. metres (0.2 sq. feet)



First Floor

Approx. 62.6 sq. metres (673.5 sq. feet)

